



YEAR 8 - YEAR 11 2023 SUBJECT SELECTION HOW TO GUIDE

INSTRUCTIONS

The following Help Guide is designed to assist you with selecting subjects for 2023:

- Subject Selection opens on **Friday July 29** at 9:00^{am} and closes **Monday August 22** at 9:00^{am}.
- Students in Years 7, 8 and 9 in 2022 are to submit a signed copy of the Subject Selection Form generated by OneSchool.
- Students in Year 10 in 2022 will attend a SET Plan Interview with a parent on **Wednesday August 10** and submit their SET P and Subject Selection Form.
- All students in Year 7 to Year 10 in 2022 will select their 2023 subjects online. *Students without internet access at home can use school computers during school time.*
- No other process is available for students to select 2023 subjects.
- Please note that subject selection by a student does not guarantee entry into the subject.
- Students must ensure that they read the relevant Curriculum Handbook. Some subjects may require additional fees to be paid so please check the fees document on the College website for further details about additional fees.

Step 1 Log on to the Oneschool website - <https://oslp.eq.edu.au>

Step 2

Type in your
School
Logon ID &
Password &
press Login

Queensland Government Department of Education, Training and Employment

Logon ID

Password

[Change my password](#)

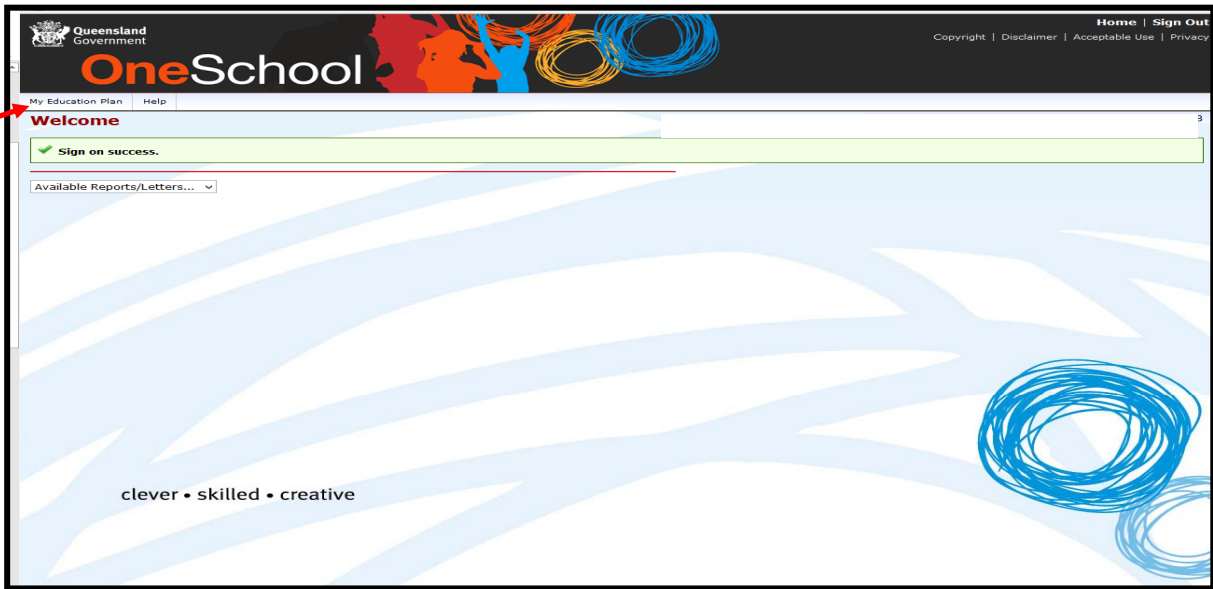
Login

[Copyright](#) | [Disclaimer](#) | [Privacy](#) | [Access keys](#) | [Other languages](#)

© The State of Queensland (Department of Education, Training and Employment) 2012.
[Queensland Government](#)

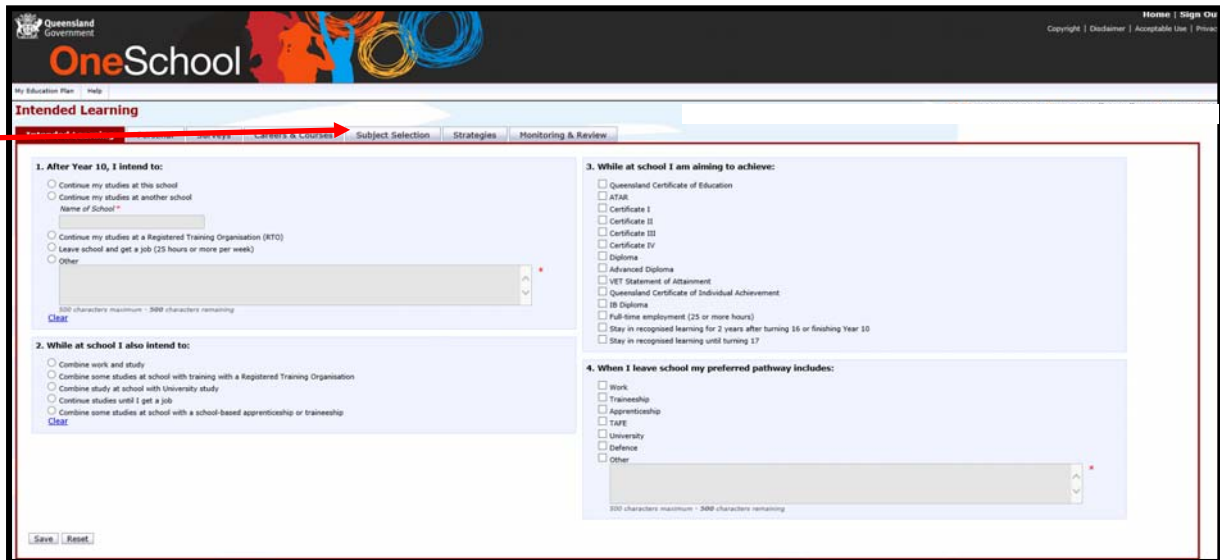
Step 3

Click on My Education Plan



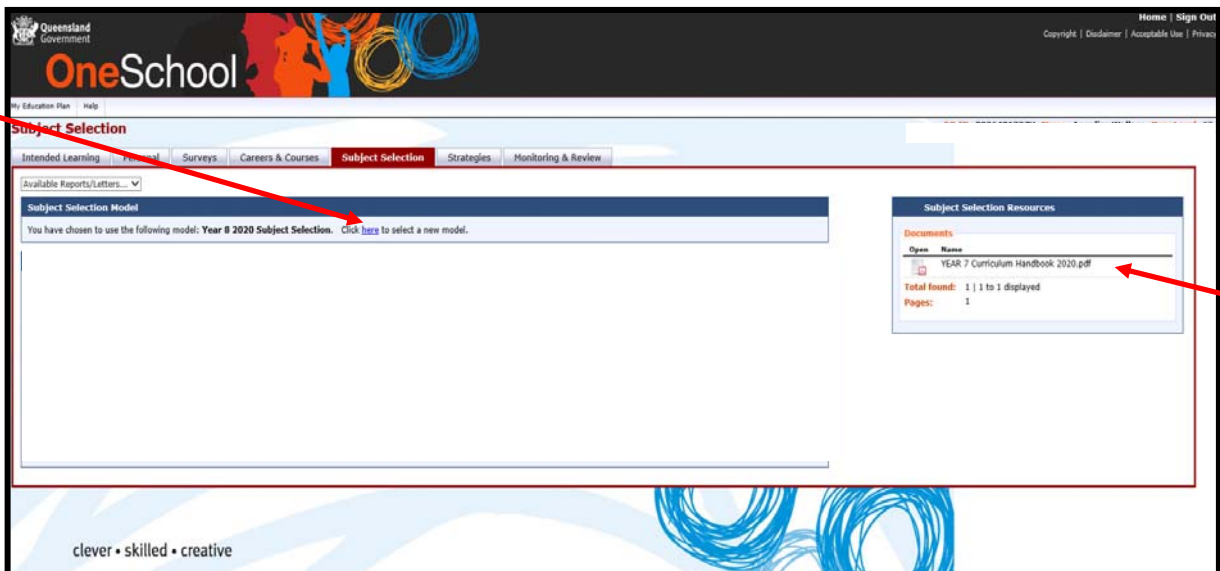
Step 4

Click on Subject Selection



Step 5

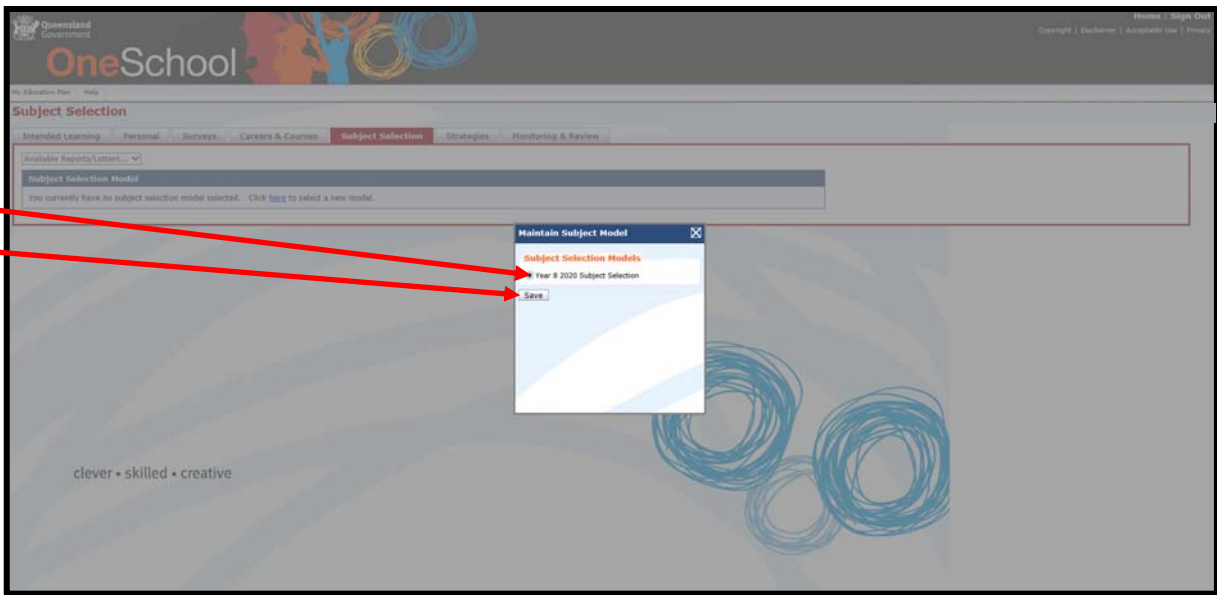
Click [here](#) to select a new model



Click here for Subject Selection Course Guide

Step 6

Click to select the Subject Selection 2022 & press Save



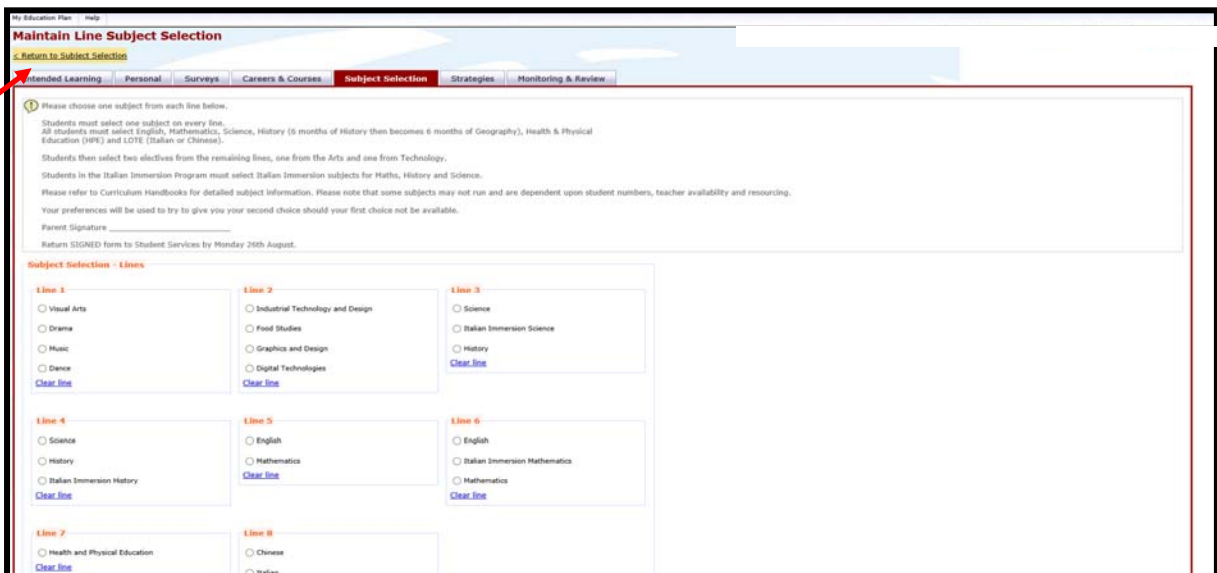
Step 7

Click on the Edit button



Step 8

This screen will appear.



You need to carefully read the instructions at the top of the form explaining year level requirements

⇒ You must select one subject on every line.

⇒ At the bottom of the page it asks you for two preferences. These are the electives that you would like to be considered for if you are not successful in gaining entry into your preferred electives. Click the **ADD NEW** button for each preference.

Once you are happy with your selections, **ENSURE YOU PRESS SAVE** at the bottom of the screen.

Step 9

Click on the Return to Subject Selection link.

Maintain Line Subject Selection

[Return to Subject Selection](#)

Update successful.

Intended Learning | Personal | Surveys | Careers & Courses | **Subject Selection** | Strategies | Monitoring & Review

Please choose one subject from each line below.

Students must select one subject on every line.
All students must select English, Mathematics, Science, History (6 months of History then becomes 6 months of Geography), Health & Physical Education (HPE) and LOTE (Italian or Chinese).

Students then select two electives from the remaining lines, one from the Arts and one from Technology.

Students in the Italian Immersion Program must select Italian Immersion subjects for Maths, History and Science.

Please refer to Curriculum Handbooks for detailed subject information. Please note that some subjects may not run and are dependent upon student numbers, teacher availability and resourcing.
Your preferences will be used to try to give you your second choice should your first choice not be available.

Parent Signature _____

Return SIGNED form to Student Services by Monday 26th August.

Subject Selection - Lines

Line 1

Visual Arts

Drama

Music

Dance

[Clear line](#)

Line 2

Food Studies

Graphics and Design

Industrial Technology and Design

Digital Technologies

[Clear line](#)

Line 3

Italian Immersion Science

Science

History

[Clear line](#)

Line 4

Science

Italian Immersion History

History

[Clear line](#)

Line 5

English

Mathematics

[Clear line](#)

Line 6

English

Mathematics

Italian Immersion Mathematics

[Clear line](#)

Line 7

Line 8

Step 10 The screen below will show the subjects you have chosen. You can edit any of these choices by clicking the Edit button. **ENSURE YOU PRESS SAVE.** Once you are happy with your choices proceed to **Step 11.**

Queensland Government

OneSchool

My Education Plan | Help

Subject Selection

Intended Learning | Personal | Surveys | Careers & Courses | **Subject Selection** | Strategies | Monitoring & Review

Available Reports/Letters

Subject Selection Model

You have chosen to use the following model: **Year 8 2020 Subject Selection.** [Click here](#) to select a new model.

Subject Selections - Line

Date	Subject	Line	Rank Order
29-Jul-2019	Drama	Line 1	0
29-Jul-2019	Food Studies	Line 2	0
29-Jul-2019	Science	Line 3	0
29-Jul-2019	History	Line 4	0
29-Jul-2019	English	Line 5	0
29-Jul-2019	Mathematics	Line 6	0
29-Jul-2019	Health and Physical Education	Line 7	0
29-Jul-2019	Italian	Line 8	0

[Edit](#)

Preferences: Music, Visual Arts

clever • skilled • creative

Step 11

Click drop down box next to Available Reports/Letters

Select Subject Selection

Queensland Government

OneSchool

My Education Plan | Help

Subject Selection

Intended Learning | Personal | Surveys | Careers & Courses | **Subject Selection** | Strategies | Monitoring & Review

Available Reports/Letters

Subject Selection Model

You have chosen to use the following model: **Year 8 2020 Subject Selection.** [Click here](#) to select a new model.

Subject Selections - Line

Date	Subject	Line	Rank Order
29-Jul-2019	Drama	Line 1	0
29-Jul-2019	Food Studies	Line 2	0
29-Jul-2019	Science	Line 3	0
29-Jul-2019	History	Line 4	0
29-Jul-2019	English	Line 5	0
29-Jul-2019	Mathematics	Line 6	0
29-Jul-2019	Health and Physical Education	Line 7	0
29-Jul-2019	Italian	Line 8	0

[Edit](#)

Preferences: Music, Visual Arts


clever • skilled • creative

If the Subject Selection form does not appear, please see the **TROUBLESHOOTING GUIDE** at the back of this instruction sheet.

Step 12

The completed Subject Selection Form below must be printed, **signed** by your parents and returned to the College by **Monday August 23** at 9:00am

- Year 7, Year 8 and Year 9 - return **signed** form to the box located in the Student Centre.
- Year 10 - bring **signed** subject selection form and SET Plan to your interview on **Wednesday August 11** (see **Step 13** for instructions on how to download your SET Plan).

North Lakes State College			
Career - Subject Selection			
Student Name:		EQ ID:	
Date of Birth:		LUI:	
Year Level:		Roll Class:	
Subject Selection			
Instructions: Students must select one subject on every line. All students must select English, Mathematics, Science, History (6 months of History then becomes 6 months of Geography), Health & Physical Education (HPE) and LOTE (Italian or Chinese). Students then select two electives from the remaining lines, one from the Arts and one from Technology. Students in the Italian Immersion Program must select Italian Immersion subjects for Maths, History and Science. Please refer to Curriculum Handbooks for detailed subject information. Please note that some subjects may not run and are dependent upon student numbers, teacher availability and resourcing. Your preferences will be used to try to give you your second choice should your first choice not be available. Parent Signature _____ Return SIGNED form to Student Services by Monday 26th August.			
Line 1	<input type="checkbox"/> Dance	<input checked="" type="checkbox"/> Drama	<input type="checkbox"/> Music
	<input type="checkbox"/> Visual Arts	<input type="checkbox"/>	<input type="checkbox"/>
Line 2	<input type="checkbox"/> Digital Technologies	<input checked="" type="checkbox"/> Food Studies	<input type="checkbox"/> Graphics and Design
	<input type="checkbox"/> Industrial Technology and Design	<input type="checkbox"/>	<input type="checkbox"/>
Line 3	<input type="checkbox"/> History	<input type="checkbox"/> Italian Immersion Science	<input checked="" type="checkbox"/> Science
Line 4	<input checked="" type="checkbox"/> History	<input type="checkbox"/> Italian Immersion History	<input type="checkbox"/> Science
Line 5	<input checked="" type="checkbox"/> English	<input type="checkbox"/> Mathematics	
Line 6	<input type="checkbox"/> English	<input type="checkbox"/> Italian Immersion Mathematics	<input checked="" type="checkbox"/> Mathematics
Line 7	<input checked="" type="checkbox"/> Health and Physical Education		
Line 8	<input type="checkbox"/> Chinese	<input checked="" type="checkbox"/> Italian	<input type="checkbox"/> Italian Immersion
Preferences: Music, Visual Arts			
Thursday, August 01, 2019 9:35:32 AM		User: awall179	
 Ref - SETSubjectSelection-2324 - VR2.1.0 -0526481337V-0-0		Page 1 of 1	

You have now completed your 2022 Subject Selection Form. A new timetable will be distributed to you in the last week of Term 4.

No subject changes will be allowed after this date

Step 13 This step only applies to current Year 10 students (*students entering Year 11 in 2022*) who need to download their SET Plan.

Click on Home button

Home | Sign Out
Copyright | Disclaimer | Acceptable Use | Privacy

Queensland Government

OneSchool

My Education Plan | Help

Subject Selection

Intended Learning | Personal | Surveys | Careers & Courses | **Subject Selection** | Strategies | Monitoring & Review

Available Reports/Letters... ▾

Subject Selection Model
You have chosen to use the following model: **Year 11 Subject Selection - 2015 (COPY)**. Click [here](#) to select a new model.

Subject Selections - Line

Date	Subject	Line
06-Aug-	Mathematics B	Line 1
06-Aug-	Engineering Technology	Line 2
06-Aug-	English	Line 3
06-Aug-	Business Communication and Technologies	Line 4
06-Aug-	Visual Art Studies	Line 5
06-Aug-	Italian	Line 6
06-Aug-	Tutorial/Sport	Line 7
06-Aug-	Access	Line 8

[Edit](#)

Preferences Certificate II in Business (VBU11), Geography (GEG11)

Subject Selection Resources

Documents

Open	Name
	NLSC Senior Subject Pathways 2015.pdf
	NLSC YEAR 11 & YEAR 12 Curriculum Handbook 2015.pdf

Total found: 2 | 1 to 2 displayed
Pages: 1

clever • skilled • creative

Click drop down box next to Available Reports/Letters

Select SET Plan

Home | Sign Out
Copyright | Disclaimer | Acceptable Use | Privacy

Queensland Government

OneSchool

My Education Plan | Help

Welcome

Available Reports/Letters... ▾

- Available Reports/Letters...
- Student Timetable - Weekly
- SET Plan**
- Student Course Planner

clever • skilled • creative

Print your Set Plan and have it signed by a Parent/Guardian and bring it to your SET Plan Interview.


TROUBLESHOOTING

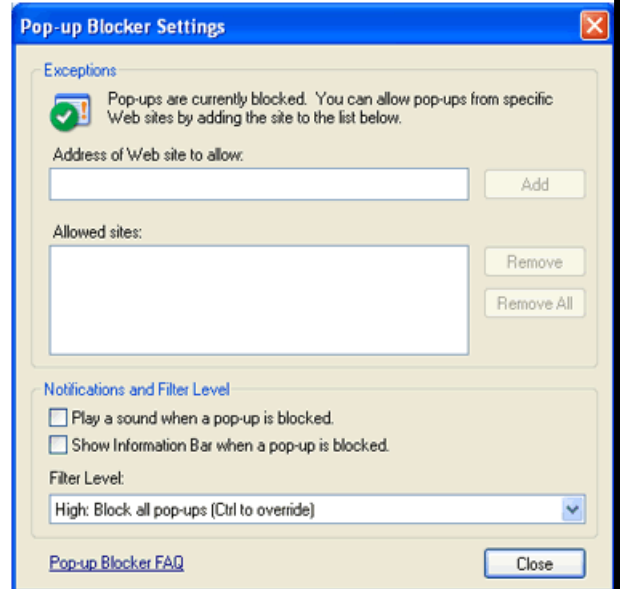
If the Subject Selection Form does not appear, you may have **Pop-Ups** blocked on your computer. Here are some examples on how to disable **Pop-Ups**.



MANAGING POP-UPS FROM INTERNET EXPLORER


Pop-up Blocker is turned on in Internet Explorer by default. To turn it off or to turn it on again if you've already turned it off, follow these steps:

1. Open Internet Explorer by clicking the Start Button , and then clicking Internet Explorer.
2. Click the Tools button, and then click Pop-up Blocker.
3. Do one of the following:
 - To turn off the Pop-up Blocker, click Turn Off Pop-up Blocker.
 - To turn on Pop-up Blocker, click Turn On Pop-up Blocker.



MANAGING POP-UPS FROM GOOGLE CHROME

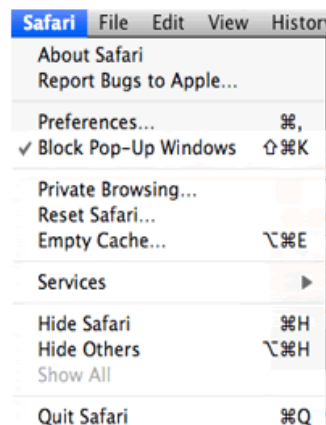
Google Chrome prevents pop-ups from appearing automatically and cluttering your screen.

Whenever the browser blocks pop-ups for a site, the  icon appears in the address bar. Click the icon to see the pop-ups that have been blocked or to manage pop-up settings for the site.



MANAGING POP-UPS FROM SAFARI

1. Open Safari
2. Click on the Safari Menu
3. Uncheck "Block Pop-Up Windows".





MANAGING POP-UPS FROM FIREFOX

Firefox prevented this site from opening 2 pop-up windows. Options

Allow pop-ups for osp.eq.edu.au
 Edit Pop-up Blocker Options...
 Don't show this message when pop-ups are blocked
 Show 'https://osp.eq.edu.au/Student/ReportFrameworkReports/ReportCriteriaLoa...
 Show 'https://osp.eq.edu.au/Student/ReportFrameworkReports/ReportCriteriaLoa...

Queensland Government
OneSchool

My Education Plan Help

Subject Selection EQ Id 6650330391N Name Maddison Fillery Year 08

Intended Learning Personal Surveys Careers & Courses **Subject Selection** Strategies Monitoring & Review

Available Reports/Letters... ▾

Subject Selection Model
 You have chosen to use the following model: **Year 8 Sem 2 Electives -** Click [here](#) to select a new model.

Subject Selections - Line

Date	Subject	Line
21-May-2015	Music	Line 1
21-May-2015	Dance	Line 2

Edit

Preferences Drama (DRA08), Food Studies (FDS08)

Subject Selection Resources

Documents

Open	Name
	NLSC YEAR 9 Curriculum Handbook idf

Total found: 1 | 1 to 1 displayed
Pages: 1

clever • skilled • creative



MANAGING POP-UPS FROM FIREFOX

The Mozilla Firefox pop-up blocker is integrated into the Firefox browser. To disable the pop-up blocker, follow the steps below:

1. At the top of the Firefox window, click on the Firefox button (Tools menu in Windows XP) and then click Options on the menu bar.
2. Select the Content panel.
3. Remove the checkmark beside the Block Pop-up windows option.
4. Click Ok to close the window.

General Tabs **Content** Applications Privacy Security Sync Advanced

Block pop-up windows Exceptions...

Load images automatically Exceptions...

Enable JavaScript Advanced...

Fonts & Colors
 Default font: Times New Roman Size: 16 Advanced...
Colors...

Languages
 Choose your preferred language for displaying pages Chgose...

OK Cancel Help

If after enabling **Pop-Ups**, the Subject Selection Form still does not appear, you can try downloading the latest version of **JAVA**. <http://www.java.com/en/download/>