



DET BYOx

Connecting to BYOx with a Windows Device V2.0



BYOx DET

Connecting with a Windows Device

This process outlines how staff and students with DET identities can connect to BYOx using a Windows device. Different Windows versions or devices may vary slightly.

Prerequisites

- **Must** be a DET user (i.e. have a DET identity and login details).
- **Must** be added to the Staff or Student Active Directory group (<schoolcode>GG_UsrBYO<Staff/Student>).
- **Must** be a local administrator on your Windows laptop or tablet.

Connecting to BYOx network as a Staff member or Student

1. Open your wireless settings and select 'DETE-Guest'.



2. Open a browser and attempt to navigate to a non-https site (i.e. <http://www.news.com.au>).

3. Whatever site you try to connect to, you will be redirected to a BYOX login page. Please read the terms and conditions. Then type in your username and password. Then click “Sign On” button.

Sign On
Welcome to the Guest Portal. Sign on with the username and password provided to you.

Username:
jgokiss

Password:

The Department of Education, Training and Employment's computer network and information, Communication and Technology (ICT) facilities are available only for approved users for approved purposes. Different users are allowed different types of access.

When using the network and facilities you must act at all times lawfully and in line with the rules that apply to you.

E.g for staff – the Code of Conduct
E.g for students – the Code of School Behaviour

Unauthorized use may result in disciplinary action being taken against you. If the Department reasonably suspects you are using the network and facilities in a manner that constitutes a crime, the Department will refer the matter to the police.

Your use of the network, including your use of the Internet and email is monitored by Information and Technologies Branch and any wrongdoing can be traced. Information you enter, access and store in the Department's network can be

I agree to the terms and conditions

Sign On

4. Click “Start’ button.

BYOD Welcome
Welcome to the BYOD portal.

1 2 3

Access to this network requires your device to be configured for enhanced security. Click **Start** to provide device information before components are installed on your device.

Start

- Type in your Device Name, then click "Continue" button.

Queensland Government Generic SHS

2 3

Device Information

Enter the Device Name and optional description for this device so you can manage it using the MyDevices Portal.

Device Name: *

My Surface Tablet

Description:

Device ID: C0:33:5E:18:8C:E1

Continue

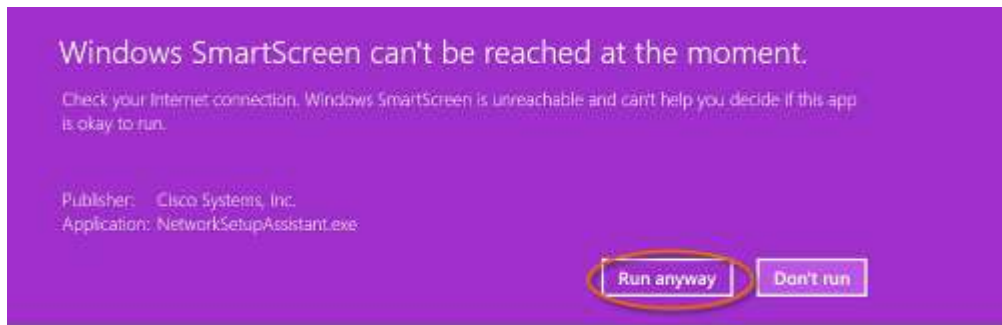
- IE Browser will automatically prompt you to download and save Cisco Network Agent Assistant installation file. Please save it.



- Once the download has completed, please click "Run".



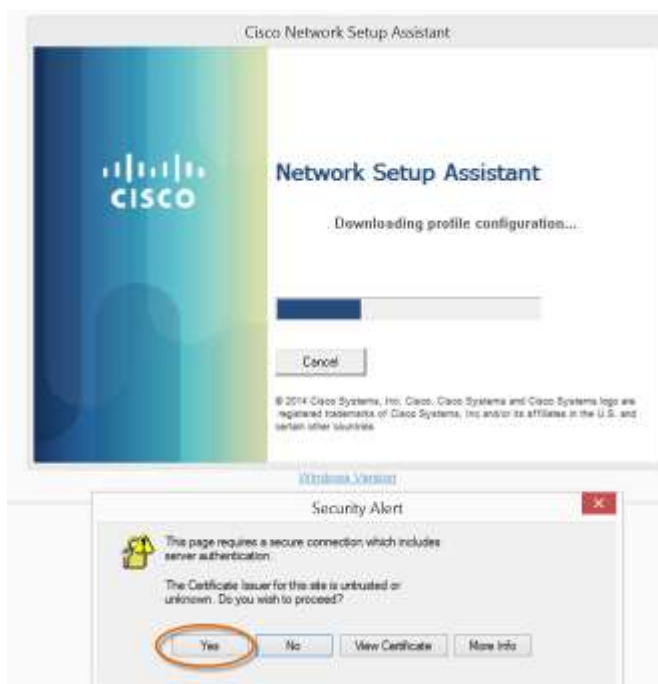
- If Windows SmartScreen warning pops out, please click “Run anyway” button to continue.



- Click “Start” button



- During the installation, please click “Yes” if Security Warnings pop out





11. Click "Exit".



12. Launch a browser and navigate to any website. Enter your DET network credentials, read and accept the terms and conditions and then click "Ok".



13. Your windows device is connected to DETE-BYOx network with Internet access now. You will be prompted to enter your DET username and password every eight hours.

